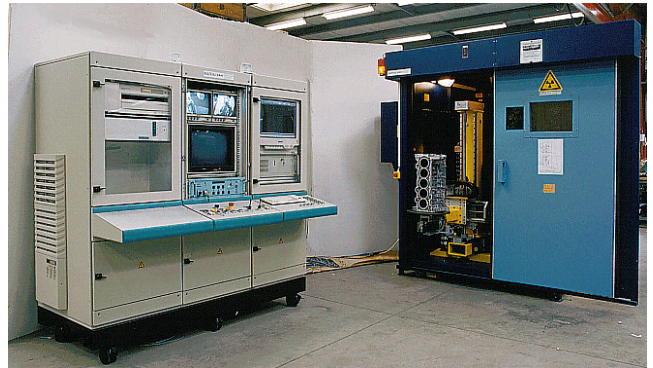


## REAL TIME INSPECTION SYSTEMS

A System is an independent unit that is designed to perform inspections tasks in manual, semi or automatic mode with or without the assistance of an operator. It is generally a combination of several elements interconnected together going from the Shielded enclosure to the manipulator and the Imaging software for digital solutions.

BALTEAU NDT is known for its long tradition in the manufacture of X ray units and as a solution provider in systems for about 100 years. Systems built by BALTEAU NDT can either be unique as sometimes your products are or built as small series for general purposes applications. BALTEAU is indeed specialised in providing THE adequate and customised solution to simple or complex products.



The Baltomatic series is showing you a basic overview of what has been produced by BALTEAU in the recent years and all Systems presented in this brochure can be adapted or modified to fit exactly into your own requirements.



### *Your needs are driving our designs,*

Due to the various different systems made by BALTEAU, we can now propose any type of combinations: different generators, digital or analogical detectors, cabinet sizes or different ways of manipulating the object can be proposed and will drive the final result offered to your review.

Thanks to our long experience, we will accommodate to your budget, products and infrastructure by offering you the adapted solution to your inspection requirements in production or in a research application.

Should you be satisfied with a standard System from the BALTOMATIC series, and we will produce it for you.

## X-ray shielded cabinets (CBN)

When you want a stand alone solution and do not want or don't have the proper irradiation room, we can design it for you. Made out of Steel-Lead sandwich plates, our cabins can be equipped with hinged or sliding doors, with or without shielded window. Due to the robust and rigid constructions these cabins can also be moved from location with the appropriate lift trucks. Shielding is calculated by us following International standards and all cabins can be delivered with a Shielding Certificate issued by a third party.

Cabins are equipped with electrical connexions, switches and lighting. Sometimes, a separate section can also host the generator and cooling device.



## X-ray source (SCE)

We provide X ray sources from 100 to 450 kV with different characteristics. Once Energy and power have been defined according to the application to be done, any corresponding BALTEAU units can be selected or proposed to be integrated into a system. Mostly common integrations are BALTOGRAPH series, but when budget are limited and applications are allowing it, even BALTOSPOT units (portable) can be integrated.



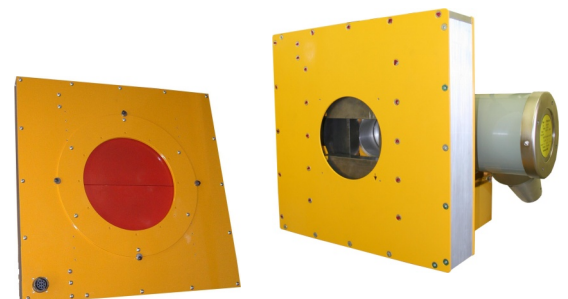
## Manipulator (MNP)

Variety of possible manipulation of an object is such that it is difficult to describe them all. Basically one can move the object, the detector and or source or all of them. The selection of the proper manipulator is a very important thing that will condition the versatility of your System in the future. When moving the object, things like Weight, Size of the object , travelling distances and Area coverage will define what need to move, with what accuracy and speed. We have list a of standard manipulators from 2 to 6+ axis on both object and Source/Detector, from 5 kg to 500 kg.



## Collimator (CLM)

Not only for shielding efficiency and reduction but also for improving image quality with the reduction of scattering, Collimators are existing to be used on the Detector or the Source side. 2 or 4 independent sliding shutter, from 100 kV to 450 kV.



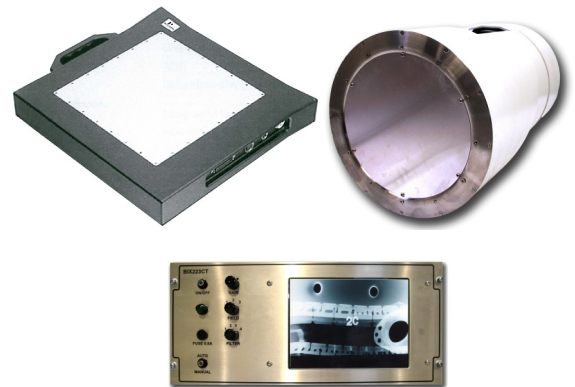
## Control panel (CTL)

All elements are gathered in a Control Bay which can have different form and sizes. The control bay is feeding the system and hosting the necessary switches, fuses or breakers to make the installation as independent as possible. Generally our control bays are 19" compatible. The Control bay presented here is a Bench type CTL which encloses the Collimator control, The Image processing and manipulator control, a Detector control (here an image intensifier) and the X ray generator control unit (LS1D)



## Detector (DTR)

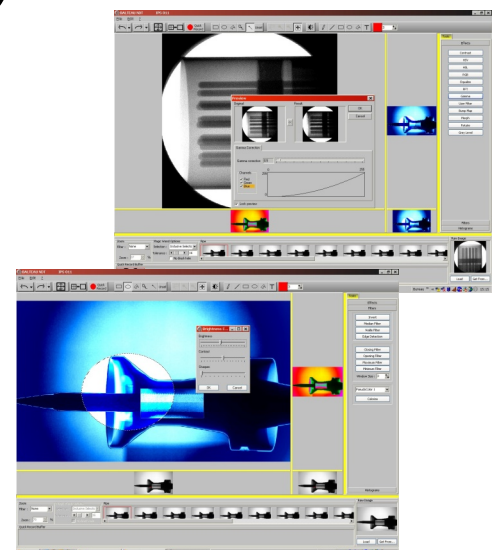
Any type of detector can be placed into a system when it has been properly designed. Film, LDA (linear detector arrays), Flat Panels or Image intensifier, BALTEAU can propose the integration of various solutions according to the specification or application. The selection of components integrated can either be the selection of the customer or a documented proposal when the customer wants a specific resolution or result. The main criteria after Performance will be price and therefore our specialists can certainly help you in that field for helping you in the proper selection.



## Image Processing System (IPS)

Successor of the first IPS designed in the early 90's by BALTEAU, the new IPS platform can be an all in one solution for displaying and controlling Images, Videos (Real time), Scanners results, Manipulator movements and positions, Sample identification and a possible Database management software.

IPS software is based on a fully standard Windows platform and all output data are following the simplest and well proven industry standard like BMP, JPG, GIF, AVI... Due to this real open platform, this is creating for your business a real added value in terms of exchange of information about the results of an inspection or an ongoing process.



## Balteau in words...

BALTEAU is a company based and established in Belgium since 1906. The activity of the power transformers successfully turned into the X-ray business in 1932. Years after years BALTEAU has affirmed its leadership leading the technology and setting the foundation of modern X-ray technologies. The first company ever to reach 200, 300 and 400 kV in the past, BALTEAU has today brought to the industry new standards that are consciously safety oriented to allow users to operate equipment safer and easier. BALTEAU is also greatly caring about environment and always uses top grade and specification materials to ensure that the efficiency of the equipment will be at the top of what is technologically achievable.

On the service and spares side, BALTEAU is providing the buyer with an exceptional and unequalled commitment of continuous service all through the life cycle of the product.

Qualified engineers and an extensive worldwide network dedicated to serve our customers is actively participating to the success of our brand and to your possibility of always getting, from the selection of your equipment to its follow up in service, a qualified and professional support.

## Balteau in numbers...

BALTEAU has a very long established network in more than 40 countries, some of our agencies are of second generation proving they rely on the quality of our products and that they are totally committed to their business in NDT.

BALTEAU has produced more than 13.000 generators spread in more than 60 countries. We have 3 ranges of products and are the only manufacturer in the world to provide from Crawlers to Systems built into the same factory.

## Balteau NDT in names...

Patented names and commercial brandings are:

BALTOSPOT (Portable and Crawlers X-ray equipment)

GFC (Panoramic portable equipment)

CERAM (Pulsed frequency portable equipment)

HAND X (Radio remote control for portable X-ray)

BALTOGRAPH (Stationary X-ray equipment)

XSD (HF CP X mobile and stationary X-ray equipment – High power)

CLD (HF CP X mobile and stationary X-ray equipment – Low power)

BALTOSCOPE (Radioscopic and Digital imaging)

AIS & Systems (Custom made)

## Producer

### **Balteau NDT sa**

Voie de Liège, 12  
B-4681 Hermalle Sous Argenteau  
BELGIUM

Tel.: +32 4 374 75 75

Fax: +32 4 374 75 85

E-mail: [balteau@balteau-ndt.com](mailto:balteau@balteau-ndt.com)

Website: [www.balteau.com](http://www.balteau.com)

## Distributor