

## 로테이션 PROBE

### 개 요

Tube 검사 전용 Probe(자성체 , 비자성체 ECT Probe, RFEC Probe, UT Probe)를 제작 사용자의 요구에 최대한 만족 시켜드립니다.

### 특 징

- 주문 제작형 PROBE
- 전용 TUBE에 대한 시험편 제작



적 용 : 차별적인 로테이팅 프로브들 - 시추공, 카운터 싱크 그리고 카운트 보어의 내부 지름 검사를 위한 프로브들.

사 양 : 프로브 지름은 1.6에서 50mm까지이며, 0.01mm 단계로 이용할 수 있다.

Fischer 커넥터는 Hocking, GE, Rohmann and Forster 드라이브 장치에 연결한다.

주파수 범위는 200kHz에서 2MHz까지.

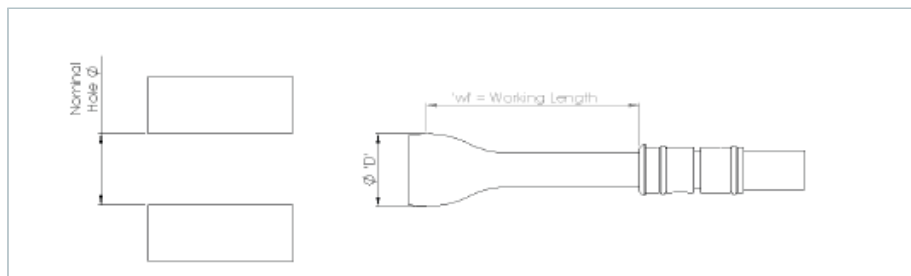
단단한 스테인레스 스틸과 신축성 있는 델린이 옵션으로 있다.

주 의 : 발주된 0.1mm 내삽형 프로브가 제조하는 동안 프로브 지름이 자동적으로 벗겨질 때, 이것은 전형적인 구

멍의 조건과 제조 오차에 있어서 좋은 상태이어야 한다. 오차가 더 큰 공간을 고려하여 부적절하다면, 프로브가 딸리는 것을 줄이기 위해 테이프 사용이 필요하다.

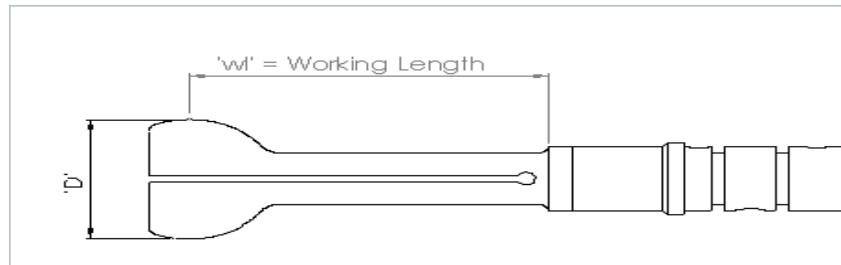
예 :  $\varnothing 12.7$  (1/2") 짜리 구멍을 검사하기 위해,  $\varnothing 12.6$ 로 만들어질  $\varnothing 12.7$  프로브가 주문되어져야 한다.

## Rigid Stainless Steel Coding



ETHer NDE Part No.	Description	Nominal Hole Dia "	Nominal Hole Dia mm	'wl'- Working Length mm
<b>Imperial Examples :</b>				
PRR0159-035	Probe. Rotating, Rigid Dia = 1.59mm (1/16"), wl=35mm	1/16"	1.59	35.0
PRR0189-035	Probe. Rotating, Rigid Dia = 1.98mm (5/64"), wl=35mm	5/64"	1.98	35.0
PRR0238-035	Probe. Rotating, Rigid Dia = 2.38mm (3/32"), wl=35mm	3/32"	2.38	35.0
PRR0287-035	Probe. Rotating, Rigid Dia = 2.87mm (7/64"), wl=35mm	7/64"	2.87	35.0
PRR0318-035	Probe. Rotating, Rigid Dia = 3.18mm (1/8"), wl=35mm	1/8"	3.18	35.0
PRR0357-035	Probe. Rotating, Rigid Dia = 3.57mm (9/64"), wl=35mm	9/64"	3.57	35.0
PRR0397-035	Probe. Rotating, Rigid Dia = 3.97mm (5/32"), wl=35mm	5/32"	3.97	35.0
PRR0437-035	Probe. Rotating, Rigid Dia = 4.37mm (11/64"), wl=35mm	11/64"	4.37	35.0
PRR0476-035	Probe. Rotating, Rigid Dia = 4.46mm (3/16"), wl=35mm	3/16"	4.76	35.0
PRR0516-035	Probe. Rotating, Rigid Dia = 5.16mm (13/64"), wl=35mm	13/64"	5.16	35.0
PRR0556-035	Probe. Rotating, Rigid Dia = 5.56mm (7/32"), wl=35mm	7/32"	5.56	35.0
PRR0595-035	Probe. Rotating, Rigid Dia = 5.95mm (15/64"), wl=35mm	15/64"	5.95	35.0
-				
PRR1830-065	Probe. Rotating, Rigid Dia = 18.30mm (23/32"), wl=65mm	23/32"	18.3	65.0
PRR1870-065	Probe. Rotating, Rigid Dia = 18.70mm (47/64"), wl=65mm	47/64"	18.7	65.0
PRR1910-065	Probe. Rotating, Rigid Dia = 19.10mm (3/4"), wl=65mm	3/4"	19.1	65.0
PRR1950-065	Probe. Rotating, Rigid Dia = 19.50mm (49/64"), wl=65mm	49/64"	19.5	65.0
PRR1980-065	Probe. Rotating, Rigid Dia = 19.80mm (25/32"), wl=65mm	25/32"	19.8	65.0
PRR2020-065	Probe. Rotating, Rigid Dia = 20.20mm (51/64"), wl=65mm	51/64"	20.2	65.0
PRR2060-065	Probe. Rotating, Rigid Dia = 20.60mm (13/16"), wl=65mm	13/16"	20.6	65.0
PRR2100-065	Probe. Rotating, Rigid Dia = 21.00mm (63/64"), wl=65mm	53/64"	21.0	65.0
PRR2140-065	Probe. Rotating, Rigid Dia = 20.20mm (27/32"), wl=65mm	27/32"	21.4	65.0
PRR2180-065	Probe. Rotating, Rigid Dia = 20.20mm (55/64"), wl=65mm	55/64"	21.0	65.0
PRR2220-065	Probe. Rotating, Rigid Dia = 20.20mm (7/8"), wl=65mm	7/8"	22.2	65.0
PRR2260-065	Probe. Rotating, Rigid Dia = 20.20mm (57/64"), wl=65mm	57/64"	22.6	65.0
PRR2300-065	Probe. Rotating, Rigid Dia = 20.20mm (29/32"), wl=65mm	29/32"	23.0	65.0
PRR2340-065	Probe. Rotating, Rigid Dia = 20.20mm (59/64"), wl=65mm	59/64"	23.4	65.0
-				
PRR1700-035	Probe. Rotating, Rigid Dia = 17.00mm wl=35mm		17.00	65.0
PRR1800-035	Probe. Rotating, Rigid Dia = 18.00mm wl=35mm		18.00	65.0
PRR1900-035	Probe. Rotating, Rigid Dia = 19.00mm wl=35mm		19.00	65.0
PRR2000-035	Probe. Rotating, Rigid Dia = 20.00mm wl=35mm		20.00	65.0
PRR2100-035	Probe. Rotating, Rigid Dia = 21.00mm wl=35mm		21.00	65.0
PRR2200-035	Probe. Rotating, Rigid Dia = 22.00mm wl=35mm		22.00	65.00
PRR2300-035	Probe. Rotating, Rigid Dia = 23.00mm wl=35mm		23.00	65.00
PRR2400-035	Probe. Rotating, Rigid Dia = 24.00mm wl=35mm		24.00	65.00
PRR2500-035	Probe. Rotating, Rigid Dia = 25.00mm wl=35mm		25.00	65.00

## Delrin Flexible Coding



ETHer NDE Part No.	Description	Hole Dia Range mm	'wl'- Working Length mm
Examples:			
PRF040-050051	probe. Rotating, Flexible, Dia = 4.0-5.0mm, wl=51.00mm	4.0-5.0	51.0
PRF047-057051	probe. Rotating, Flexible, Dia = 4.7-5.7mm, wl=51.00mm	4.7-5.7	51.0
PRF060-070051	probe. Rotating, Flexible, Dia = 6.0-7.0mm, wl=51.00mm	6.0-7.0	51.0
PRF078-080051	probe. Rotating, Flexible, Dia = 7.8-8.0mm, wl=51.00mm	7.8-8.0	51.0
PRF095-105051	probe. Rotating, Flexible, Dia = 9.5-10.5mm, wl=51.00mm	9.5-10.5	51.0
PRF111-121051	probe. Rotating, Flexible, Dia = 11.1-12.1mm, wl=51.00mm	11.1-12.1	51.0
PRF125-135051	probe. Rotating, Flexible, Dia = 12.5-13.5mm, wl=51.00mm	12.5-13.5	51.0
PRF140-150051	probe. Rotating, Flexible, Dia = 14.0-15.0mm, wl=51.00mm	14.0-15.0	51.0
PRF159-169051	probe. Rotating, Flexible, Dia = 15.9-16.9mm, wl=51.00mm	15.9-16.9	51.0
PRF175-185051	probe. Rotating, Flexible, Dia = 17.5-18.5mm, wl=51.00mm	17.5-18.5	51.0
PRF191-201051	probe. Rotating, Flexible, Dia = 19.1-20.1mm, wl=51.00mm	19.1-20.1	51.0
PRF206-216051	probe. Rotating, Flexible, Dia = 20.6-21.6mm, wl=51.00mm	20.6-21.6	51.0
PRF220-230051	probe. Rotating, Flexible, Dia = 22.0-23.0mm, wl=51.00mm	22.0-23.0	51.0
PRF235-245051	probe. Rotating, Flexible, Dia = 23.5-24.5mm, wl=51.00mm	23.5-24.5	51.0
PRF285-295051	probe. Rotating, Flexible, Dia = 28.5-29.5mm, wl=51.00mm	28.5-29.5	51.0

Other options available on request.