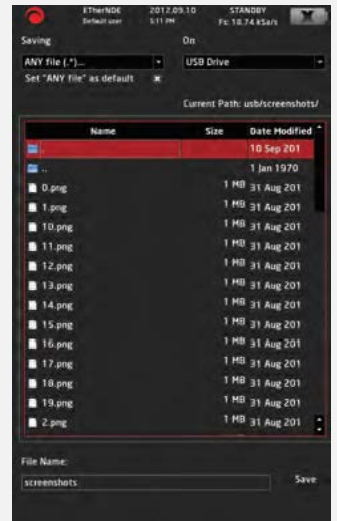
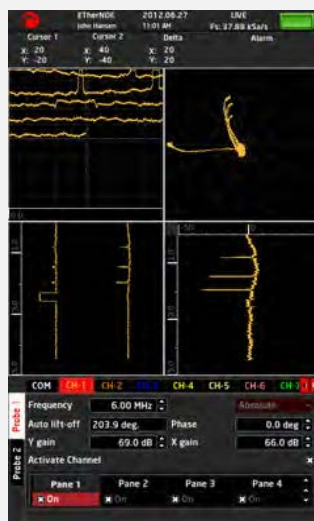


◆ 휴대용 와류 탐상기 ◆

Model : ETi-200

ETi-200은 싱글 또는 듀얼 프로브 선택을 제공한다. 듀얼 프로브 모드에서 ETi-200은 프로브마다 다중의 4개 채널이고, 반면 싱글 프로브 모드에서는 8개 채널까지 이용가능하다.



주요 특징

- 소형 경량화를 통해 무게가 2.8kg 일 정도로 가볍습니다.
- USB "on-the-go" Ethernet and SD Card 기능
- 다양한 PROBE를 수용할 수 있는 넓은 검사범위

◆ 휴대용 와류 탐상기 ◆

Model : ETi-200

Probe	Modes	ETi 100 Single Lemo 00 for absolute probes and 12 way Lemo for Reflection, Bridge and Rotary – ETi 200 as 100 but with second lemo 12 way for Reflection and Bridge. Absolute and Bridge modes selectable at 50 or 100 ohm.
	Test	Up to 8 channels with 12 user definable mixers
	Frequency	10 Hz–15 MHz in 0.01 increments per Hz, kHz or MHz range
	Drive	0.10 – 20.00v pk-pk in 0.01v increments
Signal	Phase	0° –359.9° in 0.1° increments
	Gain	Gain: –12.0 – +100 dB in 0.1 steps
	X /Y Axis pread	Any valid gain value on either channel. With lockable relative values.
	Digitising Rate	36 kHz max above 300kHz drive frequency
	Filter	Band Pass, High Pass and Low Pass
	Load	Automatic load selection for absolute probes with manual override. 8 values 1.3 uH to 470 uH
Display	Screen	7" 480 by 800 Colour TFT
	Mode	Impedance (phase) plane display with strip chart or time base 1, 2 or 4 panes
	Grid	Options of; None, 20% (5 by 5), 10% (10 by 10) and Polar
	Spot Position	+/- 50 % in 1% increments
	Persistence	Permanent and 0.01 –100.00 seconds in 0.1s increments
	External	Standard 15 way d-type for external monitor, head up display or projector.
Alarm	Type	1 per channel selectable; Box or Sector
	Setting	In increments of 1 %
	Quantity	8
	Action	Audio and or signal freeze
Data Storage	Settings	Diverse options to internal ram drive, removable SD card (up to 32GB) or USB memory stick (up to 32GB).
	Recording	Digitised data may be saved to internal memory (up to 32GB), external USB device or SD Card (up to 32GB).
Computer Interface	Interface	USB (on the go), Ethernet, SD Card
User Interface	Front Panel	Rotary control, cursor control, 18 push button keys. 4 Status LEDs
	Software	Tabs, Soft Keys, Scrollable values, Direct data entry, will operate with USB Keyboard
Enclosure	Dimensions	20.0cm(7.9") High x 23.0cm (9.0") Wide x 7.5cm (3.0") Thick
	Weight	2.8 Kg (6.2 lbs)
	Environmental	IP54
	Temperature	Maximum Operating: 0 to 30 C Recommended Storage: –20 to 70 C
Power	Internal Battery	Replaceable Li-Ion 14.4 v 5.5 hours max life
	External AC	Power/charger 100–240 v 1.2A ac 50–60 Hz 90 watts