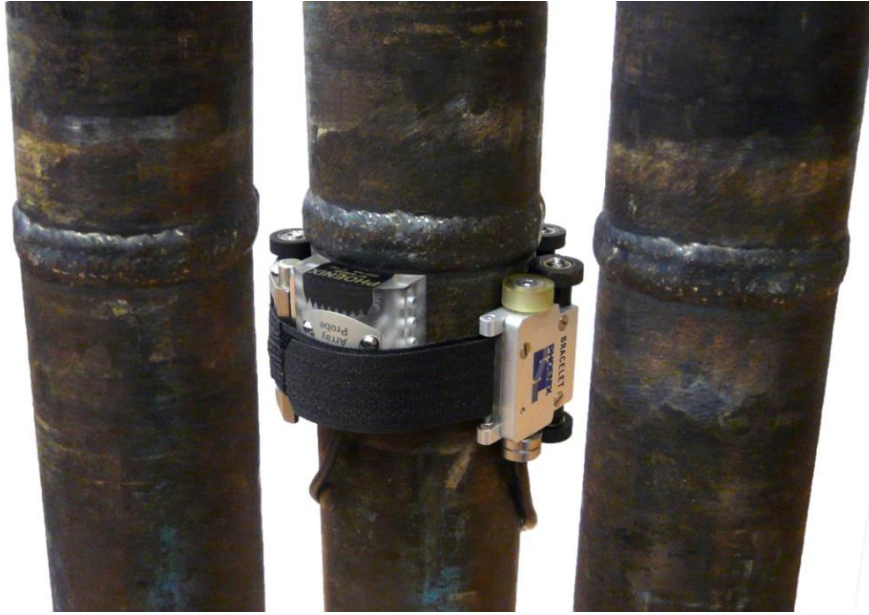
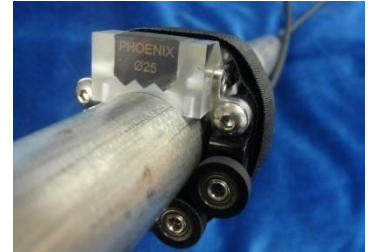


# BRACELET

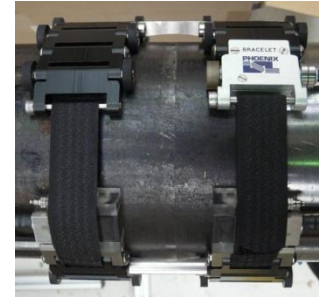
## Small Bore Manual Weld Scanner



**BRACELET scanning a 2" NPS with a single PA probe**



**BRACELET on a 3/4" NPS with a single PA probe**



**BRACELET on a 2" NPS with 2 PA probes**

The Phoenix manual **BRACELET** scanner is a low profile (13mm clearance envelope) small bore pipe scanner for use with phased array. It has the ability to inspect standard pipes ranging from 0.5" to 4" NPS. The scanner is compatible with industry standard small bore phased array probes and flaw detectors.

The **BRACELET** can operate either with a single phased array probe for pipe-to-fitting or with the extended bracket can be configured for dual sided inspections.

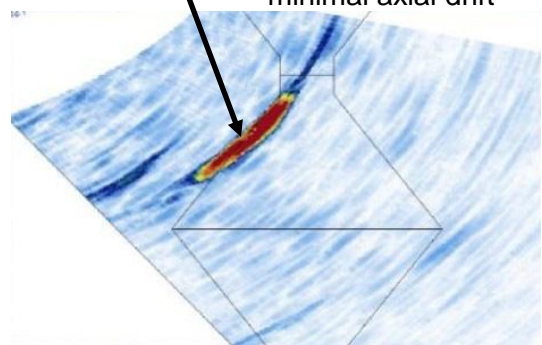
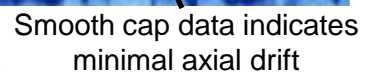
The clamping arrangement and rubber wheels provide the **BRACELET** with excellent axial grip to prevent unwanted slipping. The miniature splash proof wheel encoder provides 38 quad counts/mm around the circumferential axis.

### FEATURES

- ❑ Pipe diameters ranging from 0.5" to 4" NPS
- ❑ Has a clearance envelope of 13mm
- ❑ Option of either single or dual probe inspection techniques
- ❑ Rubber wheels provide smooth circumferential movement around pipe
- ❑ Probes and wedges are easily interchangeable
- ❑ Miniature splash-proof encoder provides 38 quad counts/mm
- ❑ Compatible with various phased array probes and flaw detectors from leading suppliers

The Phoenix logo, featuring the word "PHOENIX" in a bold, sans-serif font above a stylized graphic of a phoenix rising from the ashes, composed of horizontal and diagonal lines.

Radiograph of group porosity



PAUT S-Scan showing lack of fusion

Phoenix ISL, Dalton House, 40 Hardwick Grange, Warrington, WA1 4RF, United Kingdom  
**Tel:** +44(0)1925 826000, **Fax:** +44(0)1925 838788, **E-mail:** [sales@phoenixisl.co.uk](mailto:sales@phoenixisl.co.uk)