

Phased Array Probes 및 WHEEL

개 요

WHEEL ARRAY PROBE(2/3D)는 매우 넓은 면적을 접촉
 매질 없이 빠르고, 쉽게 적용해야 하는 경우(100/50mm중
 선택가능)에 사용된다. 즉 부식정도나, 곡선 내부 불연속
 부에 대한 검사에 용이할 뿐만 아니라, 타사 SYSTEM에
 도 적용이 가능하다.



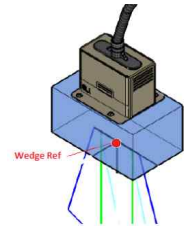
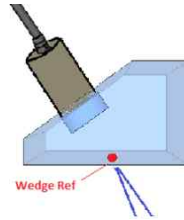
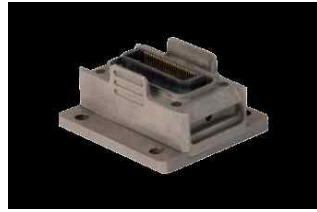
종 류

- DAAH Phased Array Probes
- X-Series Phased Array Transducers
- Standard Configuration Wheel Probe
- Wide Configuration Wheel Probe
- Corrosion' Array Wheel Probe



T-Series

1) DAAH Phased Array Probes



Linear Pulse-Echo	Type 1	주파수(MHz)	진동자 수	진동자 크기	WEDGE 형태
T1-PE-2.25M20E1.2P	DAAH	2.25	20	1.2mm	별도 부착
T1-PE-2.25M14E1.2P-35W0D	DAAH	2.25	14	1.2mm	35 부착 형
T1-PE-2.25M19E1.2P-17W0D	DAAH	2.25	19	1.2mm	17 부착 형
T1-PE-5.0M32E0.8P	DAAH	5	32	0.8mm	별도 부착
T1-PE-5.0M22E0.8P-35W0D	DAAH	5	14	0.8mm	35 부착 형
T1-PE-5.0M26E0.8P-17W0D	DAAH	5	19	0.8mm	17 부착 형
T1-PE-7.5M44E0.6P	DAAH	7.5	44	0.8mm	별도 부착
T1-PE-7.5M30E0.6P-35W0D	DAAH	7.5	30	0.8mm	35 부착 형
T1-PE-7.5M40E0.6P-17W0D	DAAH	7.5	40	0.8mm	17 부착 형

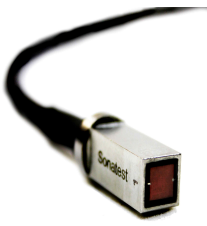




Option - DAAH with integral wedge

	Type 5	주파수 (MHz)	진동자 수	진동자 크기	WEDGE 형태
T5-PE-2.25M40E1.2P	DAAH	2.25	40	1.2mm	별도 부착
T5-PE-5M64E0.8P	DAAH	5.	64	0.8mm	별도 부착
T5-PE-7.5M88E0.6P	DAAH	7.5	88	0.6mm	별도 부착

DAAH External Wedges

T1-35W0D- REXO	Type 1, external mounted wedge, 35 degrees (SW),
T1-17W0D- REXO	Type 1 external mounted wedge, 0
T1-25.4TOD-REXO	Type 1 0 degrees(flat), Rexolite material, no contour, 25.4mm thickness
T1-12.7TOD-REXO	Type 1 (flat), Rexolite material, no contour, 12.7mm thickness
T5-35 W0D-REXO	Type 5 35 degree . Range 35-75 SW
T5-25.4T0D-REXO	Type 5, 0 degree (flat) 25.4mm thickness
T5-12.7T0D-REXO	Type 5, Wedge 0 degree (flat) 12.7mm thickness delay line.

X-Series

X-Series Phased Array Transducers				
				
X1 시리즈	X4 시리즈	X3 시리즈	X5 시리즈	Wedge

SONATEST사는 Phased Array 장비의 전파 및 노하우를 기반으로, X-시리즈 Probe들을 개발하였으며, 이 제 산업표준 사양의 보증과 함께, 다양한 측정 범위와 주파수를 제공함으로써, 사용자의 선택 폭을 넓혔다. 이 X-시리즈들은 내장된 2.5m(5m 선택 사항) 케이블과 타사 Phased Array장비와 호환이 가능한 IPEX 커넥터를 사용한다.

X1 시리즈	
소형 PROBE로써, 항공기 분야 및 검사에 제약이 있는 곳에 적합함.	
Transducer Number	사 양 (Description)
X1PE5.0M10E0.6PIX250	Min casing probe, linear pulse-echo array, 5MHz, 10 elements, 0.6mm pitch, 6x5 active area, 5mm elevation, external wedge mounting.
X1PE10M10E0.6PIX250	Min casing probe, linear pulse-echo array, 10MHz, 10 elements, 0.6mm pitch, 6x5 active area, 5mm elevation, external wedge mounting.
X1PE10M16E0.3PIX250	Sub-Min casing probe, linear pulse-echo array, 10MHz, 16 elements, 0.3mm pitch, 5x5 active area, 5mm elevation, external wedge mounting.
Wedge Number	사 양 (Description)
X1-SB54-N0L	X1 Delay Line 0 Degree, 20mm thick for X1 miniature probe.
X1-SB54-N55S	X1 Wedge 55 degree SW for X1 miniature probe
X1-SB54-N60L	X1 Wedge 60 degree LW for X1 miniature probe
X1-SB55-N0L	X1 Delay Line 0 degree 20mm thick for X1 sub-miniature probe
X1-SB55-N55S	X1 Wedge 55 degree SW for X1 sub-miniature probe
X1-SB55-N60L	X1 Wedge 60 degree LW for X1 sub-miniature probe

X2 시리즈 S-Scan 적용에 적합하며, 일반적으로 간단한 작업에 용이한 프로브 디자인이다.	
X2PE5.0M16E0.6PIX250	Linear pulse-echo array, 5MHz, 16 elements, 0.6mm pitch, 10 x 10 active area, 10mm elevation, external wedge mounting.
X2PE7.5M16E0.6PIX250	Linear pulse-echo array, 7.5 MHz, 16 elements, 0.6mm pitch, 10 x 10 active area, 10mm elevation, external wedge mounting.
X2PE10M16E0.6PIX250	Linear pulse-echo array, 10 MHz, 16 elements, 0.6mm pitch, 10 x 10 active area, 10mm elevation, external wedge mounting.
X2PE10M32E0.3PIX250	Linear pulse-echo array, 10 MHz, 32 elements, 0.3mm pitch, 10 x 10 active area, 10mm elevation, external wedge mounting.
Wedge Number	사 양 (Description)
X2-SB56-N0L-IHC	X2 Delay Line 0 Degree, 25mm thick for X2 array probe, with irrigation & wear pins.
X2-SB56-N45S-IHC	X2 Wedge 45 degree SW for X2 array probe, with irrigation & wear pins.
X2-SB56-N60L-IHC	X2 Wedge 60 degree LW for X2 array probe, with irrigation & wear pins.
X2-SB56-N60S-IHC	X2 Wedge 60 degree SW X2 array probe, with irrigation & wear pins.

X3 시리즈 L-Scan(Linear Scan) 또는 E-Scan(Electronic Scan) 적용을 위한 이상적인 프로브들이다.	
Transducer Number	사 양 (Description)
X3PE2.2M48E0.8PIX250	Linear pulse-echo array, 2.25MHz, 48 elements, 0.8mm pitch, 39 x 8 active area, 8mm elevation, external wedge mounting.
X3PE3.5M64E0.6PIX250	Linear pulse-echo array, 3.5MHz, 64 elements, 0.6mm pitch, 39 x 8 active area, 8mm elevation, external wedge mounting.
X3PE5.0M64E0.6PIX250	Linear pulse-echo array, 5MHz, 64 elements, 0.6mm pitch, 39 x 8 active area, 8mm elevation, external wedge mounting.
X3PE10M64E0.6PIX250	Linear pulse-echo array, 10MHz, 64 elements, 0.6mm pitch, 39 x 8 active area, 8mm elevation, external wedge mounting.
Wedge Number	사 양 (Description)
X3-SB57-N0L-IHC	X2 Delay Line 0 Degree, 25mm thick for X3 array probe, with irrigation & wear pins.
X3-SB57-N45L-IHC	X3 Wedge 45 degree W for X3 array probe, with irrigation & wear pins.
X3-SB57-N45S-IHC	X3 Wedge 45 degree SW for X3 array probe, with irrigation & wear pins.
X3-SB57-N55S-IHC	X3 Wedge 55 degree SW X3 array probe, with irrigation & wear pins.
X3-SB57-N60L-IHC	X3 Wedge 60 degree LW for X3 array probe, with irrigation & wear pins.
X3-SB57-N60S-IHC	X3 Wedge 60 degree SW for X3 array probe, with irrigation & wear pins.

X4 시리즈

일반적인 횡파 Probe와 동등한 치수와 초음파를 가진 Probe로써, 형태도 일반 8x9 Probe와 거의 같다. 간단한 앵글 빔이 요구되는 곳에서 좋은 선택이다.

Transducer Number	사 양 (Description)
X4PE2M8E1.0PN58SIX250	Phased Array probe with integral wedge, "DGS" type, 2 MHz, 8 elements, 1.0mm pitch, 8 x9 active area.
X4PE4M16E0.5PN58SIX225	Phased Array probe with integral wedge, "DGS" type, 2 MHz, 8 elements, 1.0mm pitch, 8 x9 active area.

X5 시리즈

(AWS, High Temperature & Deep Penetration)

깊은 침투 적용과 일반 검사를 목적으로 하는 저주파 고에너지 프로브들이다. 또한 고온에서도 사용 가능하다

Transducer Number	사 양 (Description)
X5PE2.2M16E1.0PIX250	Linear Pulse-Echo Array, 2.25 MHz, 16 Elements, 1.0 mm pitch, 16 x 16 Active area, 16mm elevation, external wedge mounting.
X5PE2.2M16E1.0PIX250H	Linear Pulse-Echo Array, 2.25 MHz, 16 Elements, 1.0 mm pitch, 16 x 16 Active area, 16mm elevation, hard face for direct contact.
X5PE5.0M16E1.0PIX250	Linear Pulse-Echo Array, 5 MHz, 16 Elements, 1.0 mm pitch, 16 x 16 Active area, 16mm elevation, external wedge mounting.
Wedge Number	사 양 (Description)
X5-SB58-N0L-IHC	X5 Delay Line 0 Degree, 25mm thick for X5 array probe, with irrigation & wear pins.
X5-SB58-N60S-IHC	X5 Wedge 60 degree SW for X5 array probe, with irrigation & wear pins.
X5-SB58-N60S-IHC	X5 wedge 60 degree SW for X5 array probe, with irrigation & wear pins.
X5-SB58-N60S-IHC(HT)	X5 High temperature wedge 60 degree SW for X5 array probe, with irrigation & wear pins.

Array Wheel Probe(50/100mm중 선택 가능)

SONATEST사 고유의 제작 Probe로써, 우주항공 및 부식 검사(PIPE/VESSEL)에 적합한 할뿐 아니라, SONATEST사의 제품(RapidScan/VEO/PRISMA)에 연결하여, B, C, STRIP-SCAN등의 다양한 SCAN을 구현 할 수 있는 Probe이다. 본 Probe는 음향학적으로 물과 간섭 없이 호환성을 갖는 고무 타이어를 이용하여, 젤(gel)과 같은 접촉 매질이 거의 필요 없이, 고 품질 성과를 제공하는 특징을 가지고 있다. 또한 넓은 면적 또는 곡선을 이루고 있는 부품들도 수동 또는 자동으로 검사하는데 안정맞춤이며, 중앙 스프링 적재 롤러는 부품들을 스캔할 때 일정한 압력을 줌으로써, 일정하고, 균일한 측정이 가능하게 한다.



Standard Configuration Wheel Probe(50mm)

Transducer Number	사 양 (Description)
AWP-01-26-20-05-C	1MHz/ 26el (2mm pitch) / Large Cannon Connector/ 5m Cable
AWP-02-64-08-05-C	2MHz /64el (0.8mm pitch) / Large Cannon Connector/ 5m Cable
AWP-05-64-08-05-C	5MHz/ 64el (0.8mm pitch) / Large Cannon Connector/ 5m Cable
AWP-10-64-08-05-C	10MHz / 64el (0.8mm pitch)/ / Large Cannon Connector/ 5m Cable

Wide Configuration Wheel Probe(100mm)

Transducer Number	사 양 (Description)
AWP-05-128-08-05-C	5MHz / 128el (0.8mm pitch)/ / Large Cannon Connector/ 5m Cable

Corrosion' Array Wheel Probe(50mm)

Transducer Number	사 양 (Description)
CWP-05-64-08-05-C	5MHz/ 64el (0.8mm pitch)/ Large Cannon Connector / 5m Cable
CWP-10-64-08-05-C	10MHz / 64el (0.8mm pitch)/ Large Cannon Connector/ 5m Cable