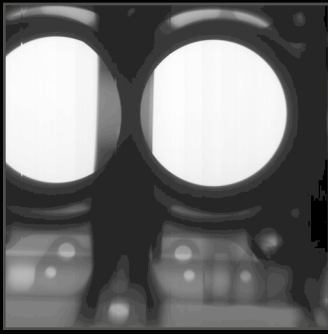




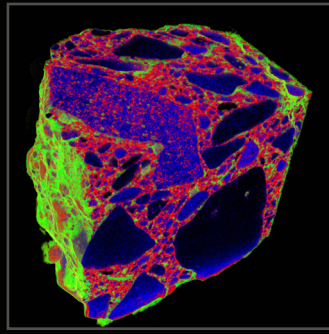
2D Digital X-ray and 3D Computed Tomography



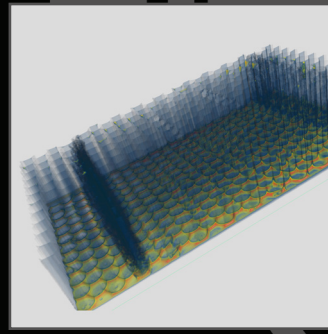
X7000 The X7000 is a multi-axis high-resolution digital x-ray system for digital radiography and computed tomography inspection of small to extra-large objects with a large format detector. The 7000 Series has innovative cabinet and manipulator designs for easy external part loading of even the largest of objects. The system can accommodate a variety of part shapes, sizes and weights. The steel/lead/steel cabinet has a fit and finish that is unparalleled in the industry and the machine tool technology used in the motion control system ensures a long trouble free life. All systems are manufactured to meet all state and federal radiation safety regulations.



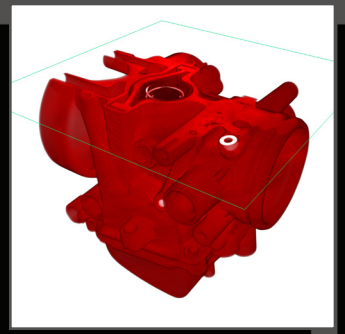
AUTOMOTIVE



GEOLOGICAL



AEROSPACE



CASTINGS

SPECIFICATIONS

OVERALL

- X-ray Energies from 10kV-450kV
- Geometric Magnification: Greater than 2000x
- Capable of scanning large components

CABINET

- External Dimensions: 156" Wide x 156" Deep x 125" Tall (3960mm Wide, 3960mm Deep, 3174mm Tall) (varies depending on shielding)
- Cabinet Features: Cable access ports with cover, interior lighting, powered bi-parting sliding access door (60" x 90" (1727mm x 2286mm) door opening), internal camera monitoring system, safety light curtains
- Steel/lead/steel construction
- Meets or exceeds all federal and state radiation safety regulations
- Touch screen operation
- Includes one ergonomic desk and chair

MANIPULATOR

- Maximum Sample Weight: 400lbs (180kg) (higher load capacity available upon request)
- Scan Travel: Vertical = 60" (1524mm), Horizontal = 120" (3050mm), Z axis (source to detector) = 80" (2030mm), Tilt = +30°/-30°, Rotation = 360° continuous
- Motorized detector travel for variable focal distance adjustment
- Rotational stage indexes outside of the cabinet for easy part loading/unloading
- Part Manipulation Control:
 - All drives variable speed joystick controlled
 - Each axis is independently controlled

Options:

- Control-X programmable CNC controlled automated scanning with automatic image processing and archiving capabilities
- Lateral detector motion
- Dual tubes and/or dual detectors
- Additional X-axis for long component scanning

X-RAY SOURCE

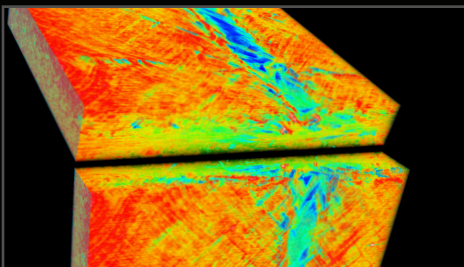
- Voltage Range: 10kV-450kV
- X-ray Tube Types: Transmission or Directional Micro-focus, Mini-focus
- Capable of dual tube design

X-RAY DETECTOR

- Digital X-ray Detector Types: Flat Panel (DDA), Linear Diode Array (LDA)
- Flat Panel Detector Size: Up to 16" x 16" (40cm x 40cm)
- LDA size up to 72" (1828mm)
- Capable of dual detector design

X-VIEW SOFTWARE

- Comprehensive acquisition, processing and archival program with user-friendly interface
- High performance image processing and measurement functions
- Non-proprietary multiple image format output/input. Diconde compliant
- Automated program functions for fast analysis
- Multiple window interface for display of raw image, processed image, density data, etc.
- Computed Tomography acquisition module
- Optional 3D Computed Tomography calibration, reconstruction and visualization
- Optional 4D Computed Tomography



COMPOSITES

NORTH STAR IMAGING, INC.



An ITW Company

Corporate Headquarters:

19875 S. Diamond Lk. Rd., Ste. 10
Rogers, MN 55374 • USA

+1 763-463-5650 • SALES@4NSI.COM



INSIDE X7000

VISIT WWW.4NSI.COM OR WWW.XVIEWCT.COM FOR MORE INFORMATION