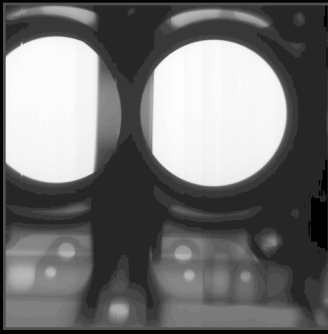




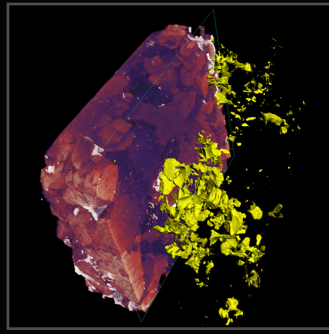
## *2D Digital X-ray and 3D Computed Tomography*



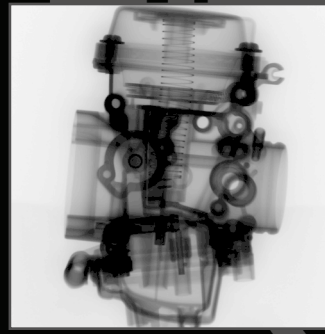
**X6000** The X6000 is a multi-axis high-resolution c-arm digital x-ray system for digital radiography and computed tomography inspection of small to extra-large objects with a large format detector. The 6000 Series has innovative cabinet and c-arm manipulator designs for easy part loading of larger objects. The system can accommodate a variety of part shapes, sizes and weights. The steel/lead/steel cabinet has a fit and finish that is unparalleled in the industry and the machine tool technology used in the motion control system ensures a long trouble free life. All systems are manufactured to meet all state and federal radiation safety regulations.



**ENGINE BLOCK**



**GEOLOGICAL**



**CARBURETOR**



**SMALL ENGINE**

## SPECIFICATIONS

### OVERALL

- X-ray Energies from 10kV-225kV
- Shielded to 160kV or 225kV
- Geometric Magnification: Greater than 2000x
- Capable of scanning large components

### CABINET

- External Dimensions: 138.4" Wide x 96.2" Deep x 132.2" Tall (3514mm Wide, 2444mm Deep, 3359mm Tall) (varies depending on shielding)
- Cabinet Features: Cable access ports with cover, interior lighting, 52" x 90" (1321mm x 2286mm) powered bi-parting sliding access door, two 15" x 24" (381mm x 609mm) leaded glass viewing windows, internal camera monitoring system, safety light curtains
- Steel/lead/steel construction
- Meets or exceeds all federal and state radiation safety regulations
- Touch screen operation
- Includes one ergonomic desk and chair

### MANIPULATOR

- Maximum Sample Weight: 500lbs (226kg) (higher load capacity available upon request)
- Scan Travel: Vertical (Y-axis) = 70" (1778mm), Horizontal (X-axis) = 48" (1219mm), Lateral (Z-axis) = 48" (1219mm), Source to Detector = Max 48" (1219mm), C-arm Rotation = +/-45°, Stage Rotation = 360° continuous
- Motorized detector travel for variable focal distance adjustment
- Part Manipulation Control:
  - All drives variable speed joystick controlled
  - Each axis is independently controlled

### Options:

- eFX-CNC programmable CNC controlled automated scanning with automatic image processing and archiving capabilities
- Rotational stage indexes outside of the cabinet for easy part loading/unloading
- Lateral detector motion
- Additional X-axis for long component scanning

### X-RAY SOURCE

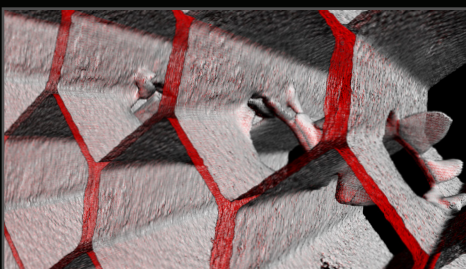
- Voltage Range: 10kV-225kV
- X-ray Tube Types: Transmission or Directional Micro-focus, Mini-focus
- Optional Microfocus Rod Anode or Center Tube Design

### X-RAY DETECTOR

- Digital X-ray Detector Types: Flat Panel (DDA), Linear Diode Array (LDA)
- Flat Panel Detector Size: Up to 16" x 16" (40cm x 40cm)
- LDA size up to 24" (609mm)

### X-VIEW SOFTWARE

- Comprehensive acquisition, processing and archival program with user-friendly interface
- High performance image processing and measurement functions
- Non-proprietary multiple image format output/input. Diconde compliant
- Automated program functions for fast analysis
- Multiple window interfaces for display of raw image, processed image, density data, etc.
- Optional Computed Tomography acquisition module
- Optional 3D Computed Tomography calibration, reconstruction and visualization
- Optional 4D Computed Tomography



**COMPOSITES**

NORTH STAR IMAGING, INC.

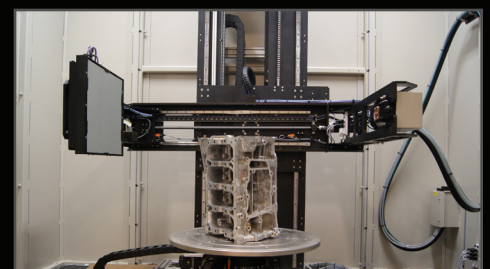


An ITW Company

### Corporate Headquarters:

19875 S. Diamond Lk. Rd., Ste. 10  
Rogers, MN 55374 • USA

+1 763-463-5650 • SALES@4NSI.COM



**INSIDE X6000**

VISIT [WWW.4NSI.COM](http://WWW.4NSI.COM) OR [WWW.XVIEWCT.COM](http://WWW.XVIEWCT.COM) FOR MORE INFORMATION