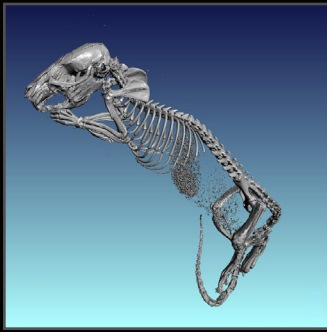




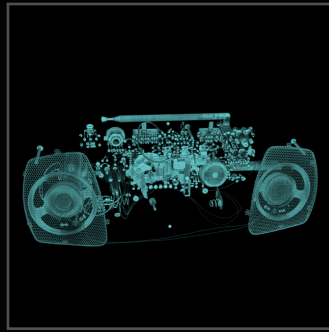
2D Digital X-ray and 3D Computed Tomography



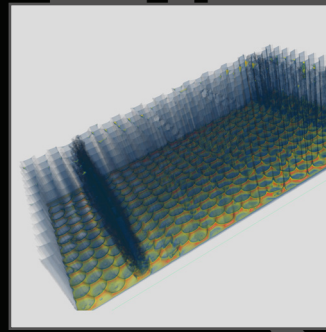
X5000 The X5000 is a multi-axis high-resolution digital x-ray system for digital radiography and computed tomography inspection of small to large objects with a large format detector. The 5000 Series has innovative cabinet and manipulator designs for easy part loading of even the largest of objects. The system can accommodate a variety of part shapes, sizes and weights. The steel/lead/steel cabinet has a fit and finish that is unparalleled in the industry and the machine tool technology used in the motion control system ensures a long trouble free life. All systems are manufactured to meet all state and federal radiation safety regulations.



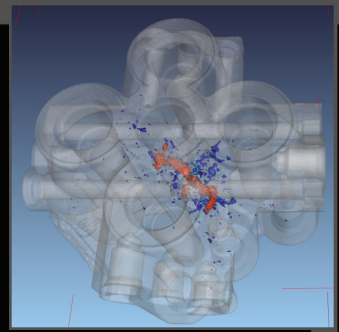
RESEARCH



ELECTRONICS



AEROSPACE



CASTINGS

SPECIFICATIONS

OVERALL

- X-ray Energies from 10kV-600kV
- Geometric Magnification: Greater than 2000x
- Overall Maximum System Resolution: better than 500nm
- Meets ASTM E2597 Standard

CABINET

- External Dimensions: 79" Wide x 108" Deep x 92" Tall (200cm Wide, 274cm Deep, 232cm Tall)
- Cabinet Features: Cable access port with cover, interior lighting, powered sliding access door(s), leaded glass viewing window/ internal camera monitoring system, safety light curtains
- Optional bi-parting doors for overhead part loading
- Steel/lead/steel construction
- Meets or exceeds all federal and state radiation safety regulations
- Touch screen operation
- Includes one ergonomic desk and chair

MANIPULATOR

- Maximum Sample Weight: 250lbs (113kg) (optional customization)
- Scan Travel (customization available): Vertical = 48" (122cm), Horizontal = 33" (84cm), Z axis (source to detector) = 48" (122cm), Tilt = +20°/-15°, Rotation (optional +/-30°) = 360° continuous
- Motorized detector travel for variable focal distance adjustment
- Part Manipulation Control:
 - All drives variable speed joystick controlled
 - Each axis is independently controlled

- NSI CNC motion control software for automated scanning with automatic image processing and archiving capabilities
- Option: Rotational stage indexes outside of the cabinet for ergonomic part loading/unloading

X-RAY SOURCE

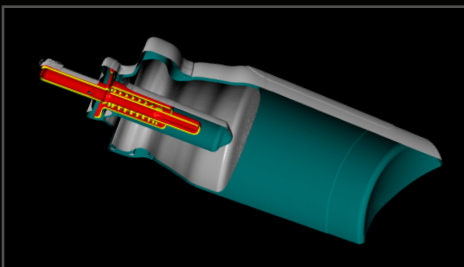
- Voltage Range: 10kV-600kV
- Minimum Focal Spot Size: < 500nm
- X-ray Tube Types: Nano-focus, Micro-focus, Mini-focus, Open or Sealed, Transmission or Directional or Dual Head

X-RAY DETECTOR

- Digital X-ray Detector Types: Flat Panel (DDA), Linear Diode Array (LDA), Image Intensifier
- Grade Options: Standard or CT Premium, 14bit or 16bit
- Detector Size: Up to 16" x 16" (40cm x 40cm)

X-VIEW SOFTWARE

- Comprehensive acquisition, processing and archival program with user-friendly interface
- High performance image processing and measurement functions
- Non-proprietary multiple image format output/input. Diconde compliant
- Automated program functions for fast analysis
- Multiple window interface for display of raw image, processed image, density data, etc.
- Computed Tomography acquisition module
- Optional 3D Computed Tomography calibration, reconstruction and visualization
- Optional 4D Computed Tomography



MEDICAL ASSEMBLIES

NORTH STAR IMAGING, INC.

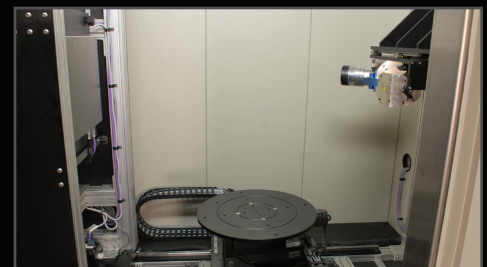


An ITW Company

Corporate Headquarters:

19875 S. Diamond Lk. Rd., Ste. 10
Rogers, MN 55374 • USA

+1 763-463-5650 • SALES@4NSI.COM



INSIDE X5000

VISIT WWW.4NSI.COM OR WWW.XVIEWCT.COM FOR MORE INFORMATION